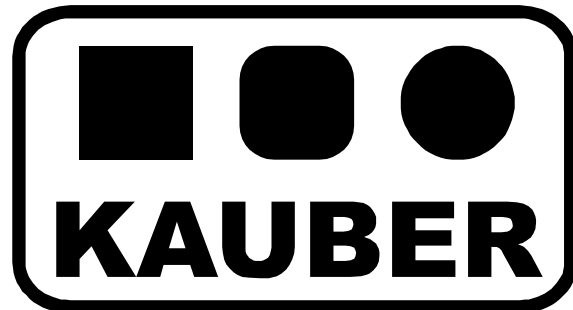


PROJECTION SCREEN INSTALLATION MANUAL



Frame screen FRAME

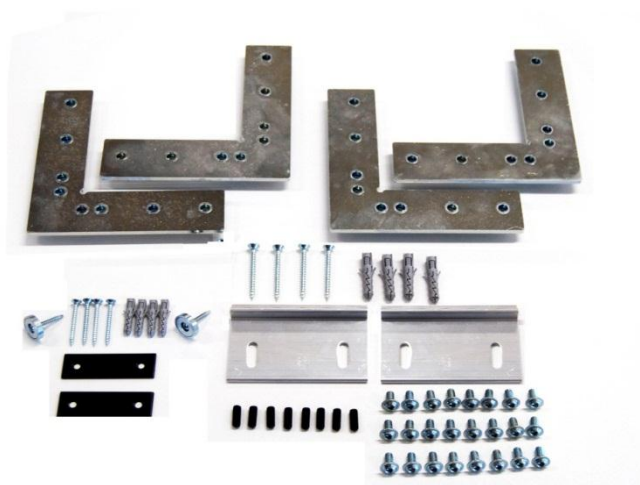


The FRAME series includes projection screens with a perfectly taut projection surface stretched on a stylish aluminum construction. This series is dedicated to demanding users and is specially designed for home theater and lecture halls.

CAUTION!!!
INSTALLATION AND OPERATIONAL NOTES

1. The screen should be mounted away from moisture and strong sunlight.
2. For cleaning use a soft damp cloth. Do not use active cleaning agents. After cleaning, wipe the screen carefully to remove any moisture.
3. The properly mounted screen must be absolutely levelled in every plane.
4. DIMENSIONAL TOLERANCE: Projection surface: $\pm 0.5\%$ of nominal size; components $\pm 5\text{mm}$

Kit contents:	Quantity:
Frame screen - frame elements	4 pcs
Mounting angle iron	4 pcs
Screw M6x12 (screw "A")	24 pcs
Grub screw M6 (screw "B")	8 pcs
Magnet with screw	2 pcs
Wall mounting bracket	2 pcs
Mounting pins for handles (pin + screw)	4 pcs
Magnet plate	2 pcs
Mounting pins for plate (pin + screw)	4 pcs
Projection surface	1 pcs



SCREEN INSTALLATION

1. Put all the frame elements on a clean and level surface. Slide the angle iron into the profile of the screen frame with the smooth side up as shown in Figure 2 (the protruding parts of the thread must be at the bottom of the angle iron).

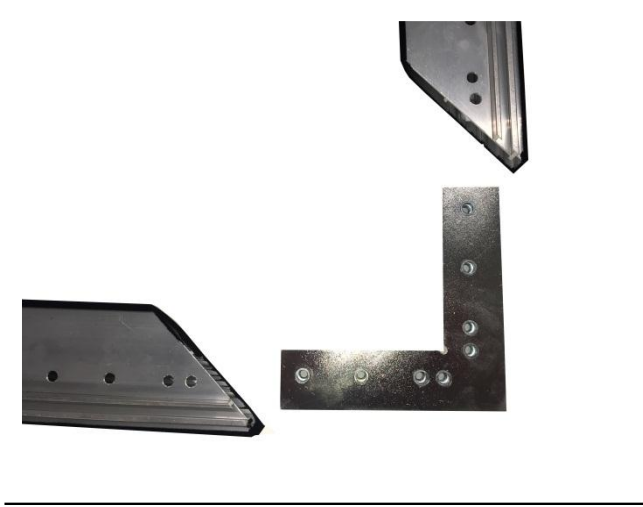


Fig.1



Fig.2

2. Fix the angle iron to the screen frame with the attached screws (Fig. 3) and insert the other frame to form a straight angle (Fig. 4).



Fig.3



Fig. 4

3. Adjust the screen profiles to obtain a right angle and tighten the "A" screws (Fig. 5). If the frame profiles do not form a single plane, use the "B" screws (Fig. 4) to calibrate the profile by tightening one of the screws to get as equal plane as possible, as shown in Figure 6.

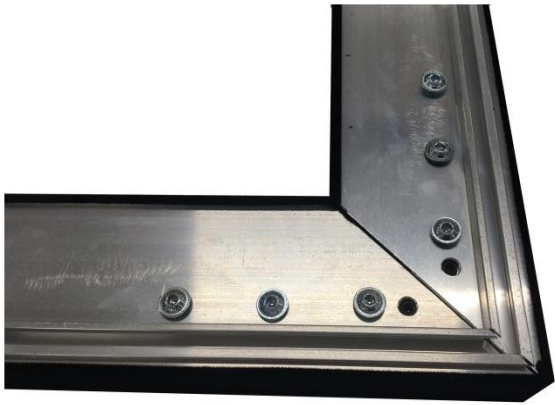


Fig.5



Fig.6

4. After assembling the frame (Figure 7), spread the projection surface so that the surface welds are visible from above. Straighten the surface (Fig. 8).

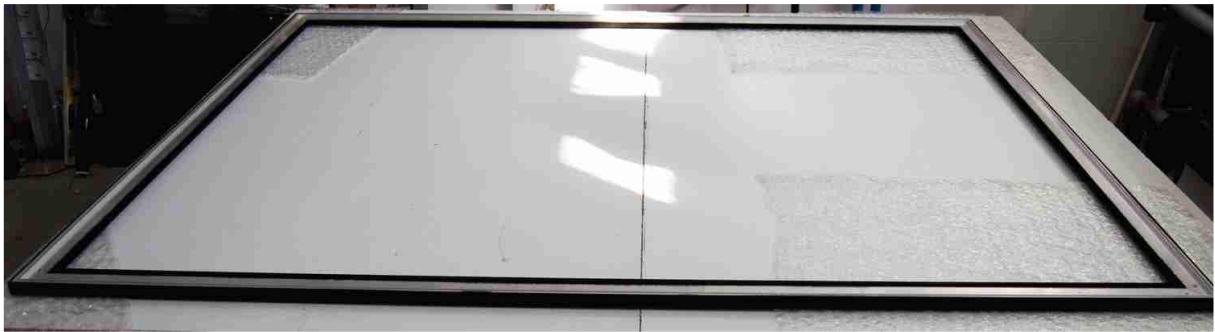


Fig. 7



Fig. 8

5. Gently insert the attached steel bars (Fig. 9) into the welded surface pockets. Then, pull and fix the surface to the frame with plates (Fig. 10 to Fig. 15).

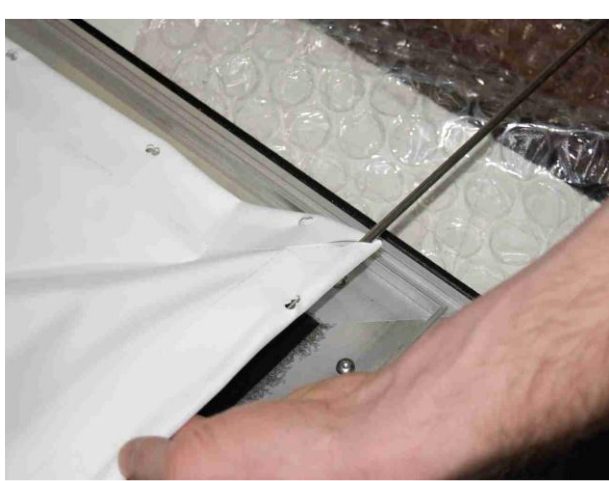


Fig.9

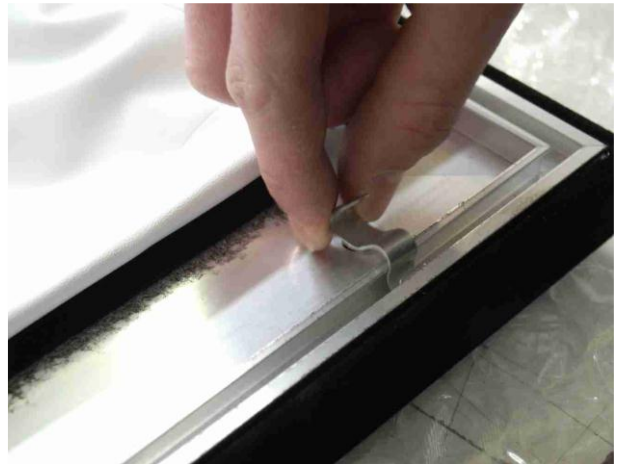


Fig.10



Fig.11

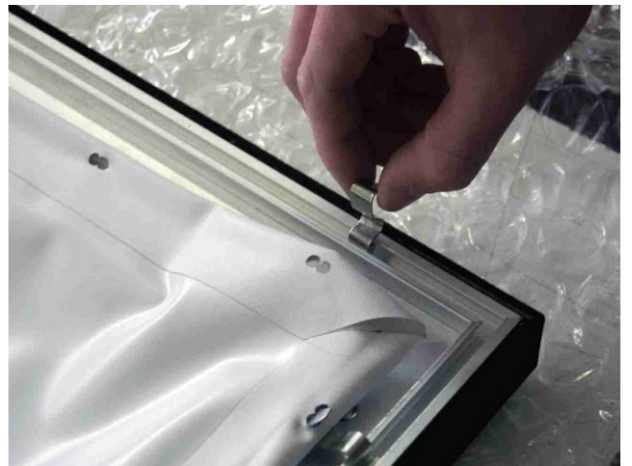


Fig.12

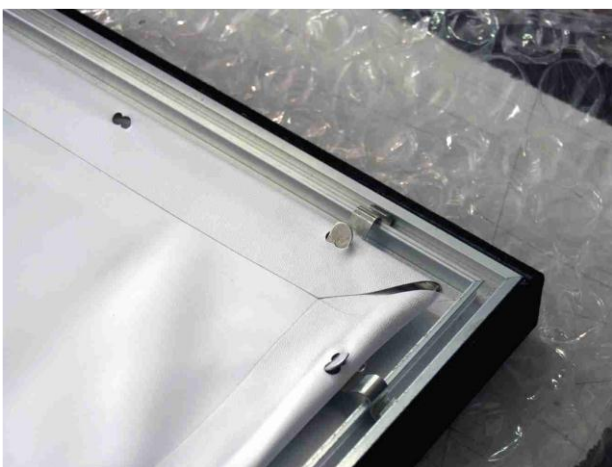


Fig.13



Fig.14

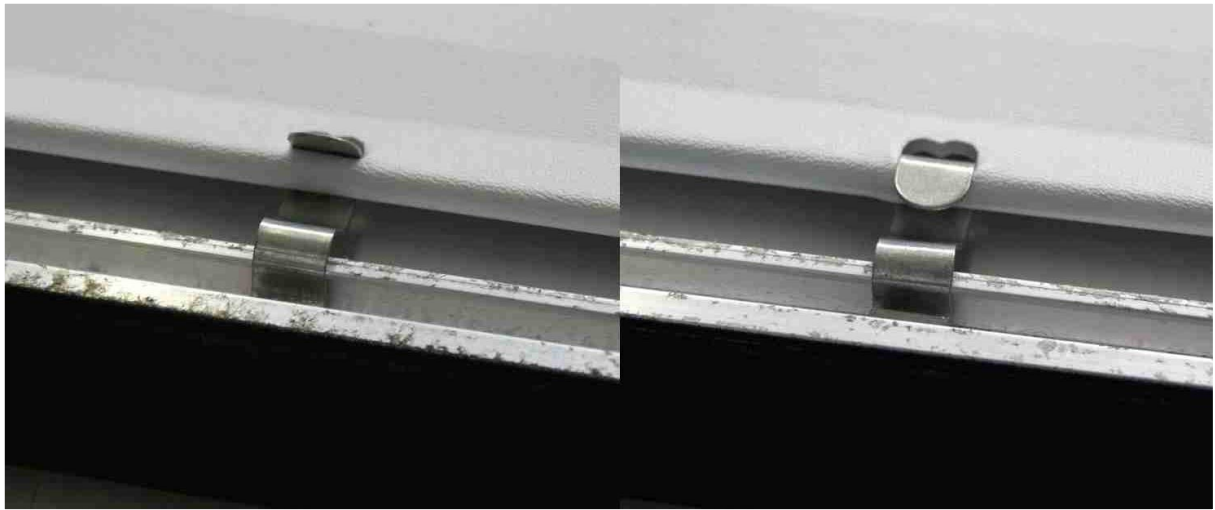


Fig.15

6. Attach the magnet (Fig. 16) to the lower frame profile (Fig. 17) at a distance of up to 20 cm from the edge of the frame.

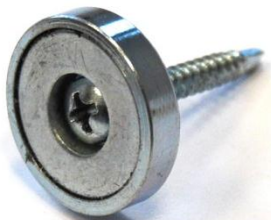


Fig. 16



Fig.17

7. Attach the mounting brackets (Fig. 18) to the wall, keeping in mind that the hanging frame will be about 3mm above the top of the bracket (about 66 mm from the bottom edge of the bracket). Mounted brackets must be within 30 cm from the ends of the screen frame. After hanging, the screen profile is locked on the handle, Fig. 19.

After hanging on the handles, the screen can be moved in the horizontal plane (left, right).



Fig.18



Fig.19

8. Two wall mounting plates are included in the kit so that the lower corners of the screen do not stick out from the wall (Fig. 20).

Tip! Pull down the suspended screen frame and fix the plate from Fig. 20 to the magnet from Fig. 17. Push the screen close to the wall. Then, mark the shape of the plate on the wall, which will serve as a template for its attachment.



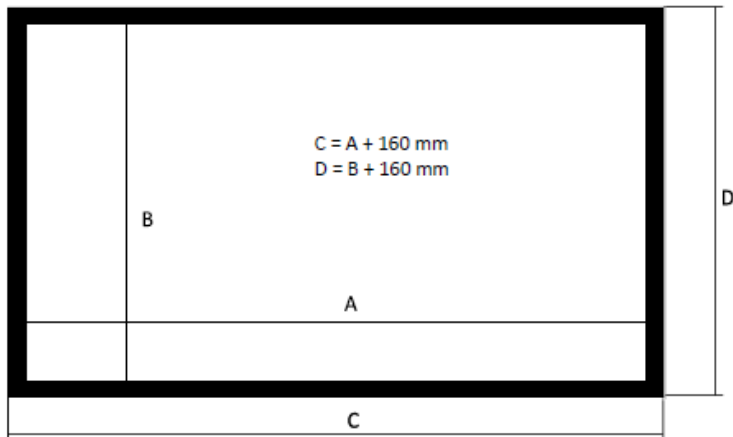
Fig.20



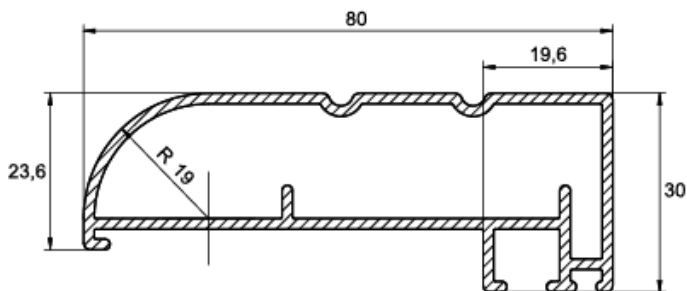
Fig.21

TECHNICAL DATA

Dimensions of the housing:



- A- Width of the surface
- B- Height of the surface



Thank you for choosing the KAUBER screen
You are more than welcome to buy other KAUBER products